



## Enhance your maintenance performance with Coswin 8i !



**Coswin 8i is a Computerized Maintenance Management System and Enterprise Asset Management solution designed to help companies increase their profitability, by improving the management of corporate assets, increasing employees' productivity and reducing costs, while ensuring regulatory compliance.**

**Siveco China has unparalleled experience implementing Coswin 8i and achieving quick return on investment. Clients range from single-site industrial plants to large-scale multi-site multi-country groups, across various industries all over China and Asia.**

## Features

### *Web architecture*

Coswin 8i full web architecture takes advantage of the latest web technologies (JSF, HTML5, Ajax). Users have access anytime anywhere from any internet browsers, minimizing network traffic and hardware requirements.

As a result Coswin 8i can be implemented in very different configurations, from the simplest to the most complex, in local or extended network, on Oracle or SQL Server database.

### *Design & ergonomics*

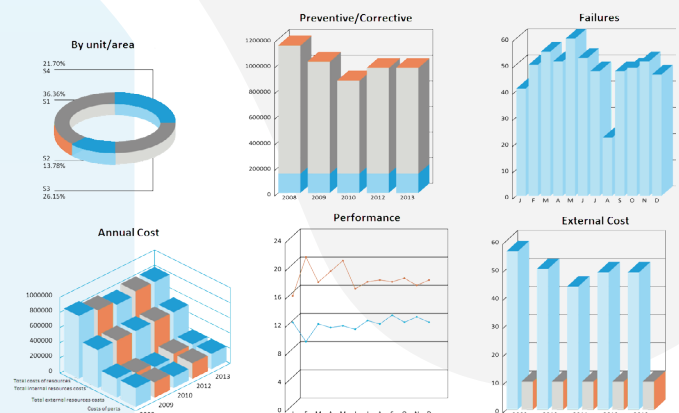
Coswin 8i is intuitive and easy to use, making its deployment very efficient. The software benefits from an innovative approach combining performance, user friendliness and simplicity, in a way that feels natural for end-users. Data manipulation is easy, with spreadsheet-like input, mass data update, on-request statistics, and simple export to spreadsheet.

### *Adaptability*

Coswin 8i is multi-company and multi-language. The system is fully customizable for each user profile: terminology, screens layout, additional data fields, links to external applications, contextual menus, etc. User only sees data specific to their organization and authorization level.

### *Reporting & performance indicators*

Coswin 8i produces user-friendly reports to evaluate maintenance effectiveness and asset performance, thus providing a clear rationale for strategic and financial decisions. Siveco provides a library of standard reports based on international standards, which can be easily customized to meet specific reporting requirements, thanks to the integrated reporting tools.



### *Regulatory compliance and traceability*

Coswin 8i helps companies ensure and demonstrate compliance with safety, environmental and other regulatory standards. The system provides audit trail functionality and access security for all transactions, including 21CFR11-compliant electronic signatures.

# Functionality

## Strategic assets management

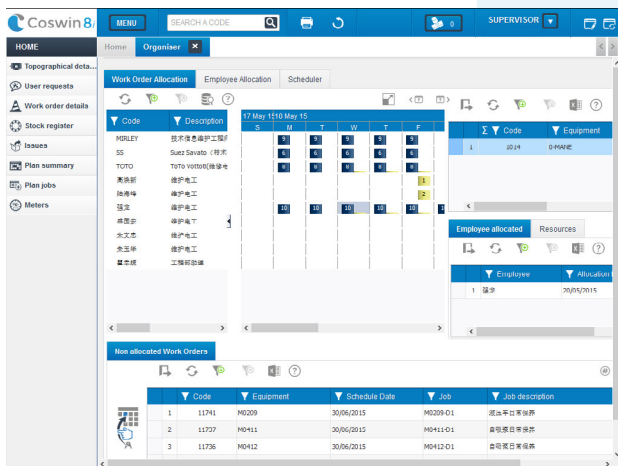
Coswin 8i provides a centralized register of all assets. The solutions maintains all technical records in hierarchical structures (organizational, geographical, functional and technical) and by categories. Technical specification, spare part, safety instructions, etc. are directly accessible in the system. Easy-to-use graphical access to this wealth of data is available via the Diagram Editor module.

## Work management

The entire maintenance work process is managed in Coswin 8i, from the initial job requests (JR) to work orders (WO) and feedback. The system allows systematic recording and analysis of failures (Symptoms, Defects, Causes, Actions). Coswin 8i manages all types of technical activities: preventive maintenance, corrective maintenance, inspections, improvement and projects.

## Resources management

The Resource Management functionality provides a calendar of all planned work and corresponding resources (employees, contractors and skills, equipment and tools, parts and facilities), with embedded scheduling and optimization tools.



## Stock management

Coswin 8i includes a comprehensive stock management module and can be integrated with third-party ERP software. It provides full functional coverage: reservation, issue, receipt, transfer, direct purchase for stock and non-stock items or tools, handling of repairable items, across multiple stock locations.

## Purchase management

Coswin 8i covers all purchasing needs from suppliers management, purchase requests (including automatic stock reorders) and purchase orders for assets, parts and services. Prices, budgets, invoices are also managed and the system

includes a comprehensive quotation module for maintenance service contracts, integrated with work orders.

## Metrology

Coswin 8i offers a dedicated metrology module for instrument calibration, measurements, history and traceability, fully integrated with the other Coswin 8i modules.

## Project

The Project module helps prepare, plan and follow-up the execution of maintenance projects requiring tasks, resources, equipment, suppliers, facilities, as well as tracking of cost and time. These include overhauls, construction, installation of new machines, improvement projects etc. Project tasks may also generate work orders.

## Multiple organizations management

Coswin 8i handles multiple companies and organizational entities (divisions, departments, etc.), with the ability to separate data depending on the user's entity. Each entity possesses its equipment, stores and items, employees, approval workflows and separate cost tracking.

## Workflow

Coswin 8i workflow module optimizes the approval processes of the company. Approval processes can be defined for different types of transaction (job request, purchase order, work order, etc...), to alert users when their approval is required and to track progress.



## Easy integration into the corporate information system

Today, maintenance processes are no longer limited to the factory or the maintenance department: they are collaborative. For this reason, Coswin 8i Service Oriented Architecture (SOA) allows for interactions with other applications and Siveco provides a range of standard tools to integrate the system into the corporate IT environment.

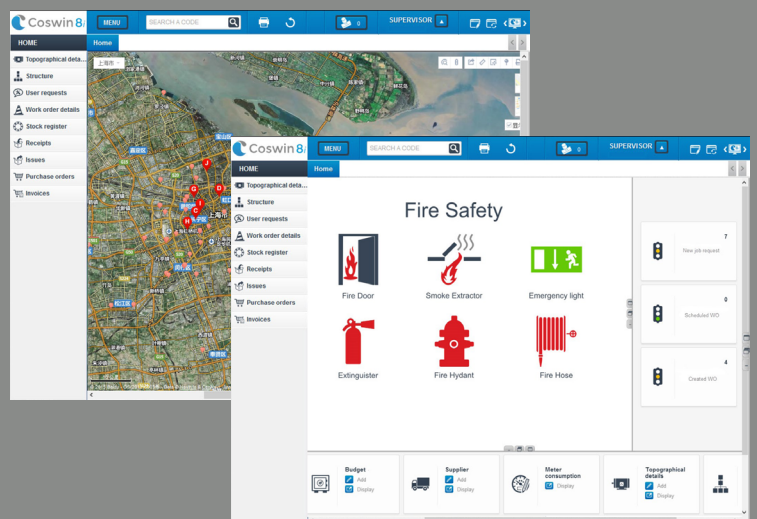


### *A customizable homepage for each user profile*

*Coswin 8i homepages conveniently group relevant information and functionality in one single view:*

- Real-time performance indicators
- Navigation through graphical diagrams
- Integrated maps
- Integrated websites or other web applications

*All with direct access to relevant Coswin 8i data and functional modules.*



## Mobility

Coswin 8i is natively available in touchscreen mode for tablet users. Siveco also provides a range of mobile apps allowing maintenance technicians and warehouse personnel to work online and offline.

## A flexible offering

Siveco China offers various choices for the deployment of Coswin 8i:

- On-premise license purchase: in this traditional model, Coswin 8i software license is purchased and installed on a server managed by the client.
- Software-as-a-Service (SaaS): the usage of the system is provided as a service; Coswin 8i is licensed on a subscription basis and is hosted on Siveco's secure cloud platform.

Siveco customers can choose the deployment model that best corresponds to their needs, in compliance with their IT policies. Siveco partners with Aliyun (AliCloud), a subsidiary of Chinese internet giant Alibaba, to provide fully-managed mission-critical cloud computing service.

## About Siveco China

Siveco China, founded in 2004, is the country's largest maintenance consultancy and a pioneer in the development of Maintenance 4.0 technologies. Based on a long experience of "maintenance with Chinese characteristics", Siveco has developed a unique approach combining maintenance consulting and software tools. While the Chinese market has historically been plagued by IT suppliers without understanding of industrial reality, Siveco is run by maintenance people for maintenance people, focusing on obtaining rapid and sustainable improvement.

Siveco China has over 800 customer sites, including ABB, Alstom, Baida Air, Brose, Carrefour China, CEPESA, Changcheng Property Group, CNEEC, Fushun Mining Group, Engie, Greenland Holdings, Hanwha Chemical, International Paper, Nokia, Saint-Gobain, Shanghai World Expo 2010 pavilions, Shell, Sichuan Lutianhua, Suez Environnement, etc.

Siveco is the only China-based maintenance consultancy to operate outside of China and the only company in Asia to have obtained the ISO9001:2008 certification for maintenance improvement services and CMMS development.

Siveco China is a subsidiary of Europe's leading supplier of computerized maintenance management systems (CMMS). The company is headquartered in Shanghai, where it also operates a R&D center, and also has offices in Beijing, Chengdu and Hongkong.



Room 7F2, Zao Fong Universe Building  
No.1800 Zhong Shan Road (W)  
Shanghai, China  
Tel : +86 4006 300 213  
Fax : +86 (21) 6440 0670  
Email : info@sivecochina.com

Follow us on Wechat



# [www.sivecochina.com](http://www.sivecochina.com)